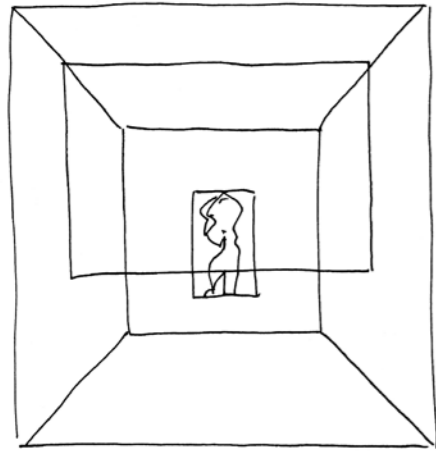
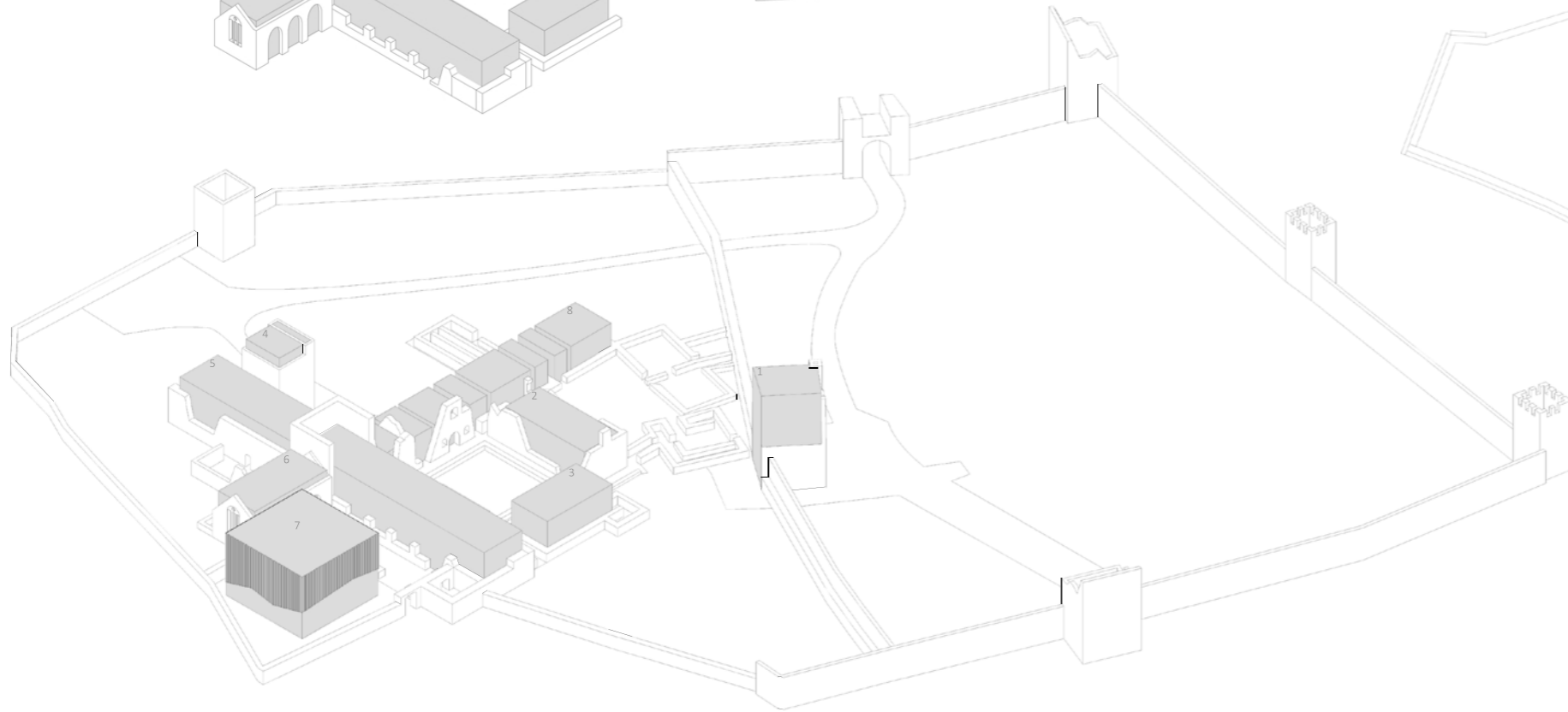
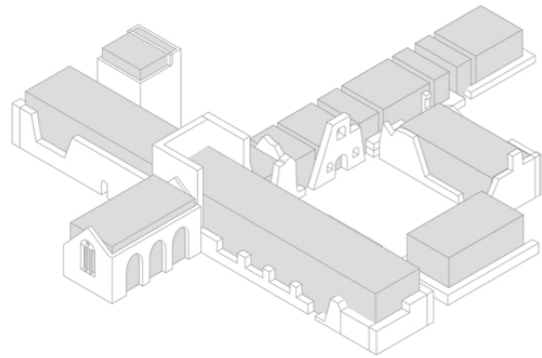
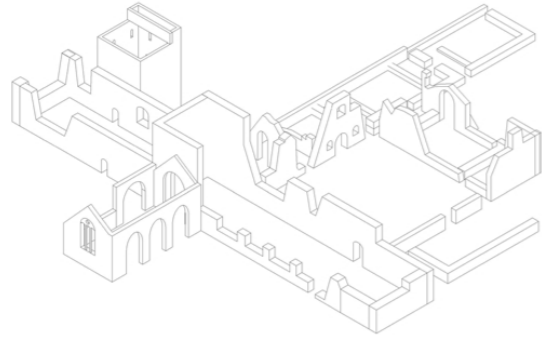
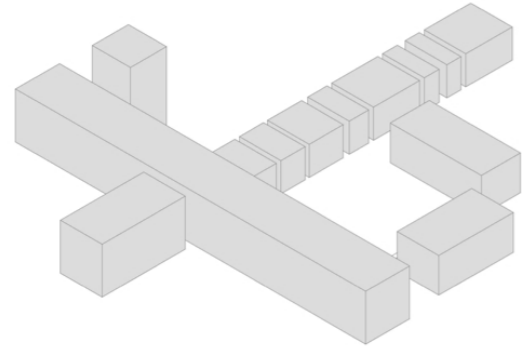
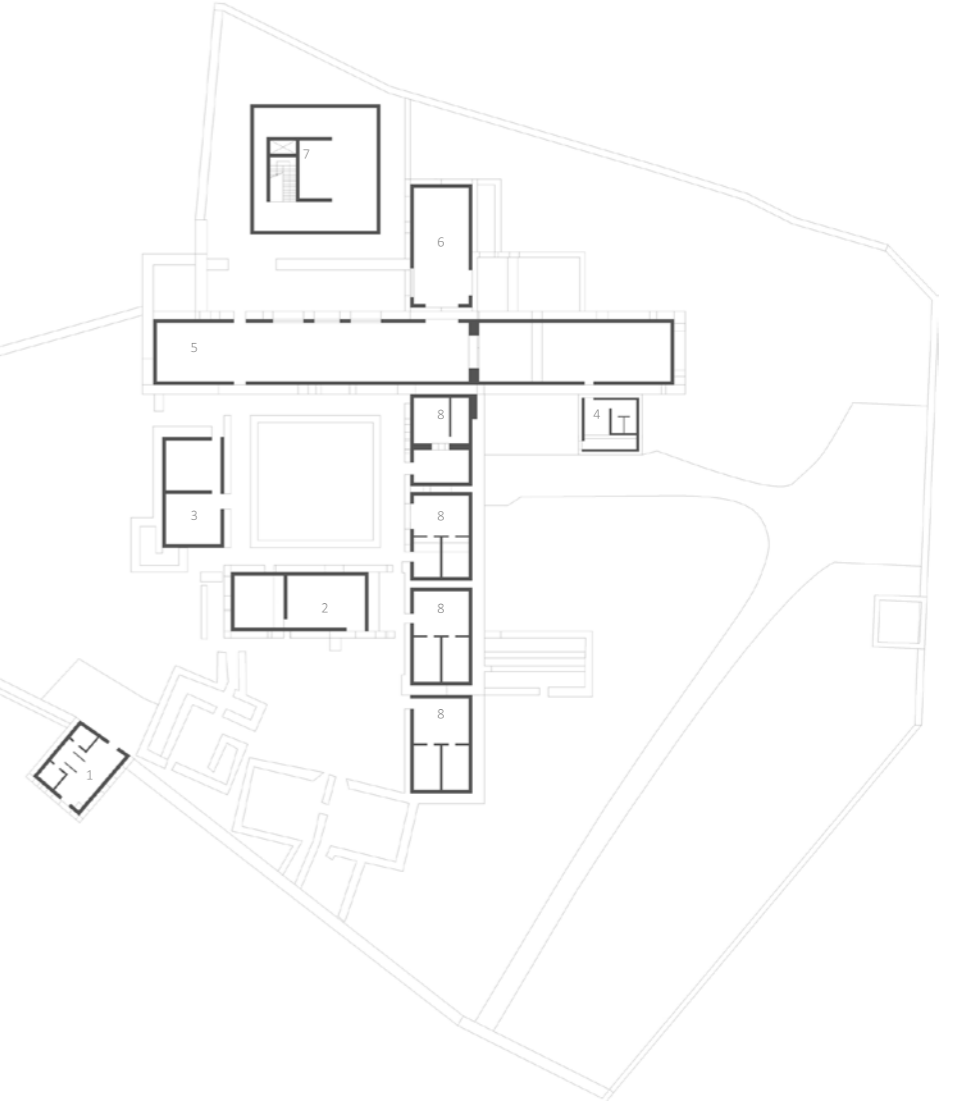


kells





- 1. Ingresso principale
- 2. Atelier/laboratorio
- 3. Atelier/laboratorio
- 4. Ingresso museo
- 5. Museo
- 6. Museo/caffetteria
- 7. Auditorium
- 8. Residenze







Il progetto consiste nell'inserimento di volumi elementari all'interno del perimetro delineato dalle rovine dell'Abbazia di Kells: dunque la disposizione in pianta dei nuovi edifici deriva direttamente dalla conformazione planimetrica esistente; tale scelta compositiva è motivata dalla volontà di progettare nel rispetto delle preesistenze, che assumono il ruolo di involucro per i nuovi corpi di fabbrica costruiti con materiale traslucido per accentuare il contrasto con le rovine. L'intento compositivo è di riproporre in chiave attuale l'ambiente tipico della comunità operosa monasteriale, mettendo a disposizione degli artisti residenze, laboratori e grandi spazi espositivi che consentano agli avventori di beneficiare della visione delle opere d'arte prodotte in loco. Il progetto nasce dalla collaborazione con l'architetto Giacomo Bonci e l'architetto Elisabetta Minelli.

The project consists in the insertion of elementary volumes within the perimeter outlined by the ruins of Kells Abbey: therefore the layout of the new buildings derives directly from the existing planimetry. This compositional choice is motivated by the desire to design in respect of the pre-existing which take on the role of casing for the new built unit with translucent material to accentuate the contrast with the ruins. The compositional intent is to re-propose the typical environment of the industrious monastery community in a current key, making residences, workshops and large exhibition spaces available to artists that allow visitors to benefit from the vision of the works of art produced on site. Access to the place is via the southern tower, in which spaces dedicated to the reception and refreshment of visitors have been created, respectively

on the ground floor and on the top floor, in addition to the administrative offices on the intermediate floors. The entrance to the museum takes place in the Prior's tower, which also has a reception area on the ground floor and administrative offices on the subsequent. The project came from the collaboration with the architect Giacomo Bonci and architect Elisabetta Minelli.

andrea mercati architetto  
corso v. emanuele 50  
06012 città di castello pg  
m 0039 347 6643483  
email@andreamercati.com  
via lorenzo bardelli 1  
50139 firenze  
www.andreamercati.com